

TapeFinder v4.4.1

Optimize your S/390 Tape Environment

TapeFinder, an integrated component of SpaceFinder Workbench, complements your z/OS and OS/390 tape management system by monitoring, detecting, analyzing and resolving tape media and tape data set issues. With powerful tools to sort, filter, trend, report and drill-down to the data set level, TapeFinder increases tape media efficiency and protects tape data storage to reduce cost and improve system performance.

Maximize the Efficiency of Tape Utilization

TapeFinder is the perfect solution to maximize the efficiency of tape utilization and batch window processing. TapeFinder recovers wasted space and improves utilization by monitoring tape management systems, virtual tape, automated tape libraries, physical media and tape drives. TapeFinder helps to reduce the batch window, manage back up activity, and provide accurate information for improved planning and budgeting.

Solution Highlights

Identify the location and amount of data stored on tape, its owner, its age and if errors are media or device related.

Sort and filter data sets to isolate obsolete or infrequently used media.

Monitor and analyze valuable information about the size of data sets, percentage of tape used and logical volumes to predict future storage and budget requirements.

Model migration from older media types and intelligently acquire new media resources based on real world data, not rough estimates.

Simplify the planning and implementation of Tape Mount Management (TMM) and Virtual Tape Systems (VTS) with easy identification of TMM and VTS candidates.

Search for tapes by utilization, age, or department criteria and then quickly insert the detail into media-summary tables.

Discover out-of-synch conditions through auditing capabilities and supplied tape analysis procedures.

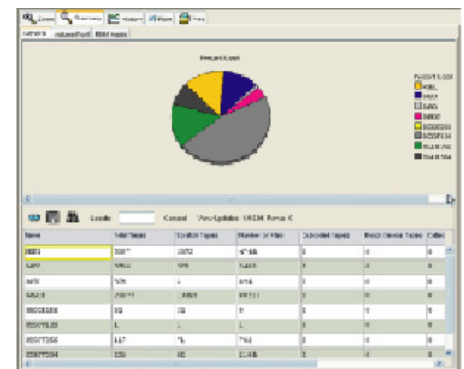
Assess the status of scratch tapes throughout your environment by tracking usage. Underutilized and older tapes can be merged thereby freeing tape media.

Submit entire lists of media to change tape status to Scratch, UnScratch, Checked In, Checked Out, Expire, or Extend status in one simple step.

Perform actions against tapes to immediately change their status.

Supported Environments

- ▶ IBM DFSMS, all versions and releases
- ▶ IBM DFSMSHsm, all versions and releases
- ▶ IBM OS/390, all versions and releases
- ▶ IBM OS/390 Communications Server, all versions and releases
- ▶ IBM z/OS, V1R1 and later
- ▶ Interlink TCP/IP, all versions and releases
- ▶ RACF, ACF2 and TopSecret, all versions and releases
- ▶ TCP/IP, all versions and releases



For more information about this or other TeraCloud products and services, please call 800.742.3389 or 425.709.2900, or visit our Web site at www.teracloud.com

Challenge

Ensuring maximum availability while controlling cost

TapeFinder enables exception management with 24/7/365 monitoring and analysis of data center storage for tape management systems, virtual tape, automated tape libraries, physical media and tape drives..

Managing the daily batch window

TapeFinder provides summary reports and drill-down analysis to optimize batch processing efficiency.

Increasing tape utilization

TapeFinder improves storage utilization with powerful modeling and capacity planning that increases tape efficiency, reduces media consumption and eliminates or postpones hardware purchases.

Monitoring critical tape storage assets by application or functional unit

TapeFinder analyzes real-time and historical storage activity to identify errors, track storage hotspots and forecast potential issues. TapeFinder helps balance tape usage and safeguard your data by identifying failing media, or drives that need to be cleaned or replaced.

Managing scratch tapes

With multi-system viewing and management capability, TapeFinder provides status of scratch tapes and easy command generation to change a tape's scratch status across the S/390 enterprise.

Solution

TapeFinder is a removable media management tool that—from one central location—monitors, analyzes and reports tape storage activity across the S/390 enterprise to improve system utilization and increase the efficient use of tape media.

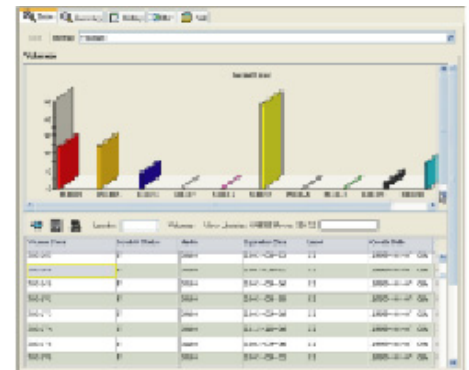
With its high level of media control and specialized productivity tools, TapeFinder can take over many manual operator and librarian tasks, thereby increasing efficiency, eliminating errors and ensuring data integrity. Also, TapeFinder can help you postpone—or even eliminate—the purchase of new tape hardware and robotic systems.

Historically, tape management simply meant controlling the physical properties of tapes within a CA-1, CA-Dynam/TLMS, or DFSMSrmm system. Today, however, storage administrators recognize that the need to control tape storage is just as important as the need to control DASD storage. They realize that if they ignore tape media management, efficiency and performance will suffer, downtime will increase, and costs will spiral out of control.

TapeFinder simplifies S/390 removable media management to report on current and historic tape activity for CA-1, Dynam/TLMS and DFSMSrmm, trend and analyze tape storage activity, view tape storage by application or functional group, and charge back costs based on actual usage.

Key Benefits

- ▶ Centralizes storage management by increasing media and robotic tape library efficiency.
- ▶ Reduces batch processing window by tracking the use of tape files to identify data sets allocated on an inappropriate media.
- ▶ Isolates obsolete files and infrequently used data sets using interactive reporting. Conduct detailed tape filtration down to age and business unit on the aggregate or by data set.
- ▶ Understand HSM Tape usage through summary level views. Drilldown capabilities enable you to visualize every volume and its valid or expired contents.
- ▶ Maintains proper scratch tape balance across your entire S/390 enterprise. Using custom filters on scratch tapes will eliminate time consuming pass-throughs and unnecessary mount times.
- ▶ Proactively manage tape storage on a data set or volume, while reviewing an online, user-defined report.



Centralize the management and control of S/390 storage tape and data sets.