

# SpaceFinder v4.4.1

## Spacefinder Audits S/390 Storage DASD

SpaceFinder, an integrated component of SpaceFinder Workbench, makes it possible to quickly and easily address vital storage management functions such as capacity planning, space utilization, catalog efficiency, SMS classifications and storage audits. By taking the complexity out of mainframe storage, SpaceFinder enables proactive storage management and quick correction of potential issues, helping to reduce costs, increase efficiency, eliminate risk and extend your current investment.

## Spacefinder Optimizes S/390 DASD Usage

Manage by exception and improve DASD utilization by ensuring that critical data sets remain available. Hotspots are identified before they become business problems and storage activity across multiple CPUs can be viewed at a glance. Efficient analysis and management of the entire mainframe storage enterprise can be accomplished from a single point of control.

## Supported Environments

- ▶ IBM DFSMS, all versions and releases
- ▶ IBM DFSMSHsm, all versions and releases
- ▶ IBM OS/390, all versions and releases
- ▶ IBM OS/390 Communications Server, all versions and releases
- ▶ IBM z/OS, V1R1 and later
- ▶ Interlink TCP/IP, all versions and releases
- ▶ RACF, ACF2 and Top Secret, all versions and releases
- ▶ TCP/IP, all versions and releases

## Solution Highlights

**Centralize** management of your S/390 storage inventory across all CPUs and geographic locations..

**Monitor** real-time and in-depth views of both physical and logical storage objects 24/7/365.

**Identify** potential catalog issues before they become business problems by checking data structures, index integrity and Catalog/VVDS synchronization.

**Protect** your environment through extensive proactive management using disk and tape auditing facilities.

**Visualize** and create custom reports on DASD, VSAM, SMS and catalog information.

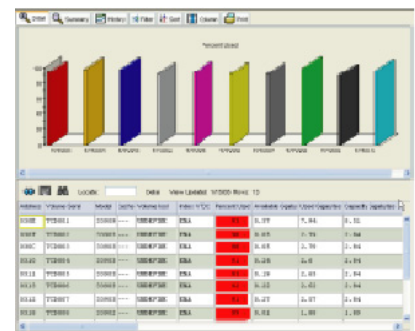
**Sort, Filter, And Drill-Down** within reports for a complete audit of your storage and data set inventory.

**Analyze** capacity trends by group, volume, system or business unit by using detailed graphing, forecasting and predictive modeling tools.

**Monitor** the health and performance of data storage and take corrective action from anywhere.

**Manage By Exception** to identify and resolve hotspots in mainframe storage.

**Compare** a point-in-time to months ago, for example, to understand pool growth both summary and detailed levels.



Monitor your S/390 DASD storage and comprehensive reporting features

For more information about this or other TeraCloud products and services, please call 800.742.3389 or 425.709.2900, or visit our Web site at [www.teracloud.com](http://www.teracloud.com)

## Challenge

### Ensuring maximum availability while controlling cost

SpaceFinder enables exception management with 24/7 monitoring and analysis of data center storage by system, application and functional unit to eliminate the risk of downtime caused by storage related issues and abends.

### Improving productivity

SpaceFinder proactively simplifies routine storage management tasks with the dynamic creation and implementation of corrective action.

### Increasing DASD efficiency

SpaceFinder improves storage utilization with powerful modeling and capacity planning. Increased DASD efficiency will either eliminate the need for or delay hardware purchases.

### Monitoring storage assets by application or functional unit

SpaceFinder analyzes storage activity to monitor and resolve potential issues thereby ensuring the health of your z/OS environment and protecting critical data.

### Understanding growth patterns and their effect on storage usage

SpaceFinder's capabilities include powerful comparison features which enable broad growth patterns to be analyzed while having the functionality to drill down on specific data points.

## Solution

SpaceFinder makes it easy to access, analyze and customize countless views of storage and data set activity. Create aggregate reports across the S/390 enterprise, or drill-down for detailed analysis of specific volumes and data sets. Develop an interactive, analytical representation of your entire DASD population, collecting, sorting and presenting storage analysis data in online or batch reports.

SpaceFinder provides a complete solution that addresses common storage issues, while offering the flexibility to manage storage across your S/390 enterprise.

**Reporting** - Graphic reporting of both real-time and historic statistics of categories such as capacity, utilization, exception and SMS managed data.

**Action** - Initiate actions which save time and eliminate the risk of human error.

SpaceFinder reporting gathers and reports on pools, volumes, data sets and action based catalogs. This comprehensive information can be used to generate corrective actions that will safeguard the health of your storage subsystem and ensure that critical applications complete successfully.

SpaceFinder simplifies S/390 storage management by enabling you to monitor and report storage activities as they occur, trend and analyze space utilization, view storage by group, and chargeback costs based on actual usage. Coupled with Total Recall and TapeFinder chargeback can be extended to Tape and DFSMSHsm.

## Key Benefits

- ▶ View native and graphic representations of your storage with either a 3270 ISPF or Java-based interface.
- ▶ Centralize storage management across many OS/390 and z/OS systems or Sysplex environments for a single point of management and control.
- ▶ Plan capacity requirements to forecast future storage needs and peak-use information by application and functional unit.
- ▶ Model, trend and forecast point-in-time and historic storage activity to enable intelligent storage resource planning.
- ▶ Implement consistent, action based storage management best practices.
- ▶ Optimize space utilization to leverage legacy hardware investments and postpone future hardware purchases.
- ▶ Tune DFSMS and DFSMSHsm with detailed information about your storage inventory.
- ▶ Reduce S/390 storage complexity with access to real-time information and the ability to manage by exception.



Centralize the management and control of S/390 storage DASD and data sets..